

Research with a Health Equity Lens

Jerry Ouner (Nutor), PhD, MS, RN, FAAN

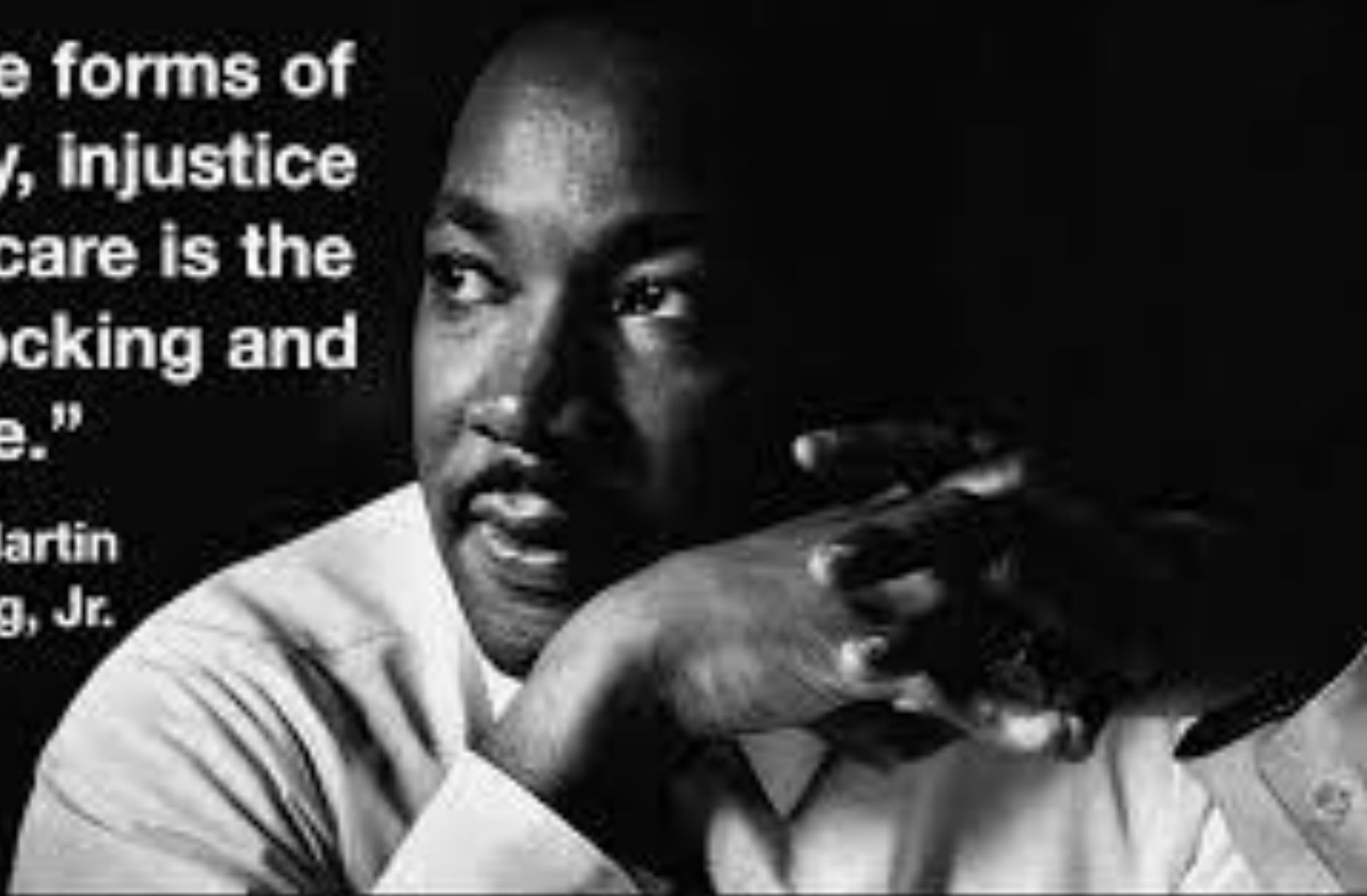
Associate Professor

Family Health Care Nursing

Center for AIDS Prevention Studies

“Of all the forms of inequality, injustice in healthcare is the most shocking and inhumane.”

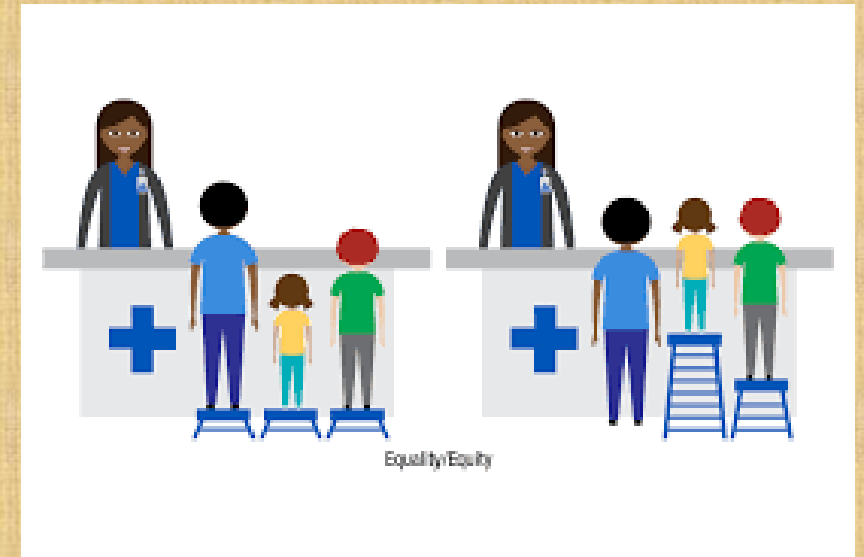
— Rev. Dr. Martin Luther King, Jr.



What is Health Equity?

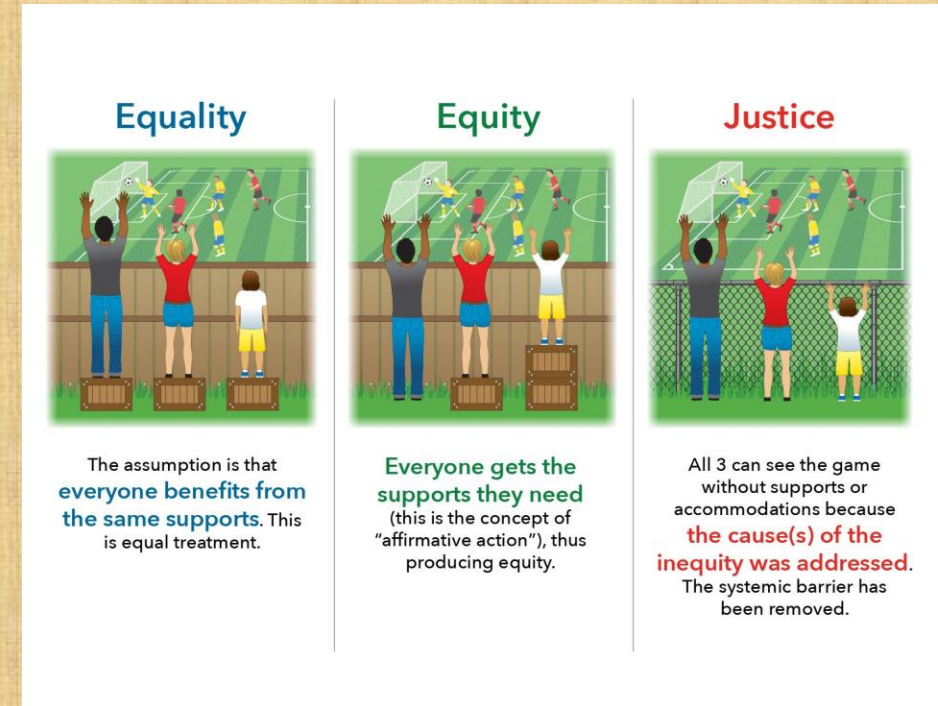
- **Health equity** is the state in which everyone has a fair and just opportunity to attain their highest level of health
- Achieving this requires ongoing societal efforts to:
 - Address historical and contemporary injustices
 - Overcome economic, social, and other obstacles to health and health care; and
 - Eliminate preventable health disparities.

Source: CDC



Your research and scholarship

- Consider the role of population health in research and interventions
- Understand complex, multidisciplinary, multilevel, and multi-factorial interactions
- Build on community resiliency and partnerships
- Develop research and professional workforce that is diverse





Professionalism
Respect
Integrity
Diversity
Excellence



UCSF PRIDE Values

- UCSF utopia world is for us to attain health equity
- You are here to help attain that
- How can you do that?

Engaging in Health Equity Research



Involve the community



Advocate for the community



Educate and create awareness on the health challenges facing the community



Put the community first in promoting health equity research



Engage diverse communities



Responding to the Current Climate

- Recognize how political polarization, misinformation, climate change, and the aftermath of COVID-19 shape health equity challenges.
- Frame research in ways that emphasize resilience, justice, and actionable change.
- Create mentorship pipelines for minority researchers.
- Recruit scholars from historically underrepresented backgrounds.



Diversity Statement

- You will be required to include your commitment to health equity during your merit and promotion packet
- This field provides the opportunity for **highlighting** your contributions to diversity Examples include:
 - Teaching, mentoring, or university and public service activities that address the needs of diverse populations
 - Clinical activities for diverse patient populations
 - Efforts to advance access to education
 - Research that highlights inequalities and promote equity



Internal funding opportunities to support diversity/health equity research

- Resources Allocation Fund (RAP)
- Hellman Fellowship
- Population Health and Health Equity Scholars Award
- AIDS Research Institute (ARI) and Center for AIDS Research (CFAR) Diversity Award
- John A. Watson Faculty Scholars (SOM only)
- Gaine Research Fund (SON Only)
- ARCHES Career Development Award
- And More!!



Thank you!